

# Quick Guide

---

## Installing the software

The DataCan Flash Drive contains all of the files you need to install the program.

- Your computer must have Microsoft .NET 3.5 Framework installed.



- Unzip the Mercury Folder
- Double click the SETUP.EXE file to launch the software installation. The USB Drivers are automatically installed

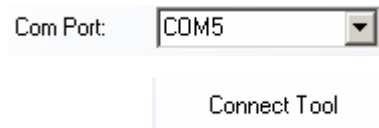


---

## Connect to Tool



- Open DataCan's Mercury software.
- Select the COM port
- Click on the "Connect Tool" button.



---

## Program Tool

- "Program Sample Rates" (between 1 second and 1 minute).
- "Duration". The length of time at the sample rate.
- If subsequent programs are required (up to 16 available steps), they can be added in the next lines. When all the programs are completed, the tool will default to 30-second sample rate and continue until the memory is full.



---

**Warning:** It is important to not disconnect the tool or USB Cable when saving or communicating with the tool.

---

---

## Download Data

A list of all the recorded jobs on the tool will be displayed.

- Select the job numbers with the check box that you want to download.

Jobs in Tool Memory

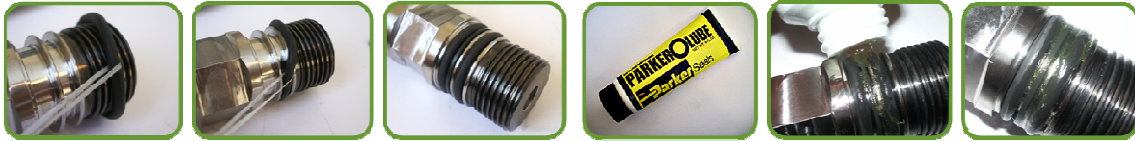
Job Number	Approximate Number of Samples	Number of Sectors	Starting Sector
<input checked="" type="checkbox"/> 1	8191	1	1
<input checked="" type="checkbox"/> 2	65528	8	2

Total Samples in Memory (approximate):  
73719  
Remaining Samples in Memory:  
958347

- Click "Download". Select a location to save the data file from the tool.

---

## O-Ring Installation



---

## Battery Pack Basics

"Utilities – Battery Calculator" allows you to easily estimate the power usage during your job.

**Warning:** It is very important to not exceed the temperature rating of the battery pack. Lithium is a volatile chemical. Over heating a pack could result in the pack exploding.

---